



HAMDDEN RHONDDA CYNON TAF LEISURE

more card

Your guide to RCT's Leisure access card

more choice...more active...more often



Money Off Regular Exercise



STRONG HERITAGE | STRONG FUTURE
RHONDDA CYNON TAF
TREFADAETH GADARN | DYFODOL SICR

Welcome to **more**, Rhondda Cynon Taf's Leisure card. It's guaranteed to save you more when using our leisure facilities! No joining fee, no initial admin fee, no contract - no worries. The **more card** is a flexible card to suit all budgets. See the chart on page four of this brochure to help you decide the most suitable card for you.

If you want to pay on the day

Level 1 Regular adult charge - **more card** only required for fitness suite and online booking.

morediscount

Level 2 Under 16, in full time education, Over 60 or in receipt of Jobseeker's Allowance contributory or disability benefit. (See application form for full list of qualifying benefits)

Level 3 Those in receipt of means-tested benefits and their dependants.
(Please enter dependants in the family section of the application form)

To obtain Level 2 and Level 3 discounts you are required to register for a **morediscount** card.

morediscount validation periods vary. Please see application form for further details.

If you want to pay monthly or annually

moremax

Get unlimited access to Zenith gyms, fitness classes, swimming including swimming lessons; racquet sports and a range of other activities during all opening hours subject to availability. Please see table opposite for details.

**Only one swimming lesson per week during the scheduled programme. Swim Wales registration fee applies at the start of each course.*

morevalue

Get unlimited access to a wide range of activities, including swimming and racquet sports during all opening hours subject to availability. Please see table opposite for details.

morefamily

We also offer discounts for families. Once you have decided which card is most suitable for each individual, we will then give you a discount based on the number of people in your family who have registered. Family members can choose the type of card to suit them.

10% discount for 2 members 15% discount for 3 members
20% discount for 4 members 25% discount for 5 or more members

No more than two adults and four children (under 16) per family. Payment can only be accepted via monthly Direct Debit from one bank account. First month payment by cash or cheque for full amount, discount will apply from second payment.

Get the most from **more**

	more discount	more value	more max
Casual swimming	Discounted price	✓	✓
Group swimming lessons	Discounted price	✗	✓◆◆
Fitness classes	Discounted price	✗	✓
Courses	Discounted price	✗	✓
Multi gym/Mini gym	Discounted price	✓	✓
Badminton per person	Discounted price	✓	✓
Squash per person	Discounted price	✓	✓
Table Tennis per person	Discounted price	✓	✓
Steam/Spa	Discounted price	✓	✓
Zenith gym	Discounted price	✗	✓
Zenith gym induction	Discounted price	✗	✓
Aqua aerobics	Discounted price	✓	✓
Snooker	Discounted price	✓	✓

✓ Unlimited use, subject to availability

✗ Not covered in this card

◆◆ Includes one swimming class only per week when paying by Direct Debit
Additional Swim Wales registration fee payable for each course

All activities and classes are subject to availability

Don't forget your **more** card can be used at any Rhondda Cynon Taf leisure centre!

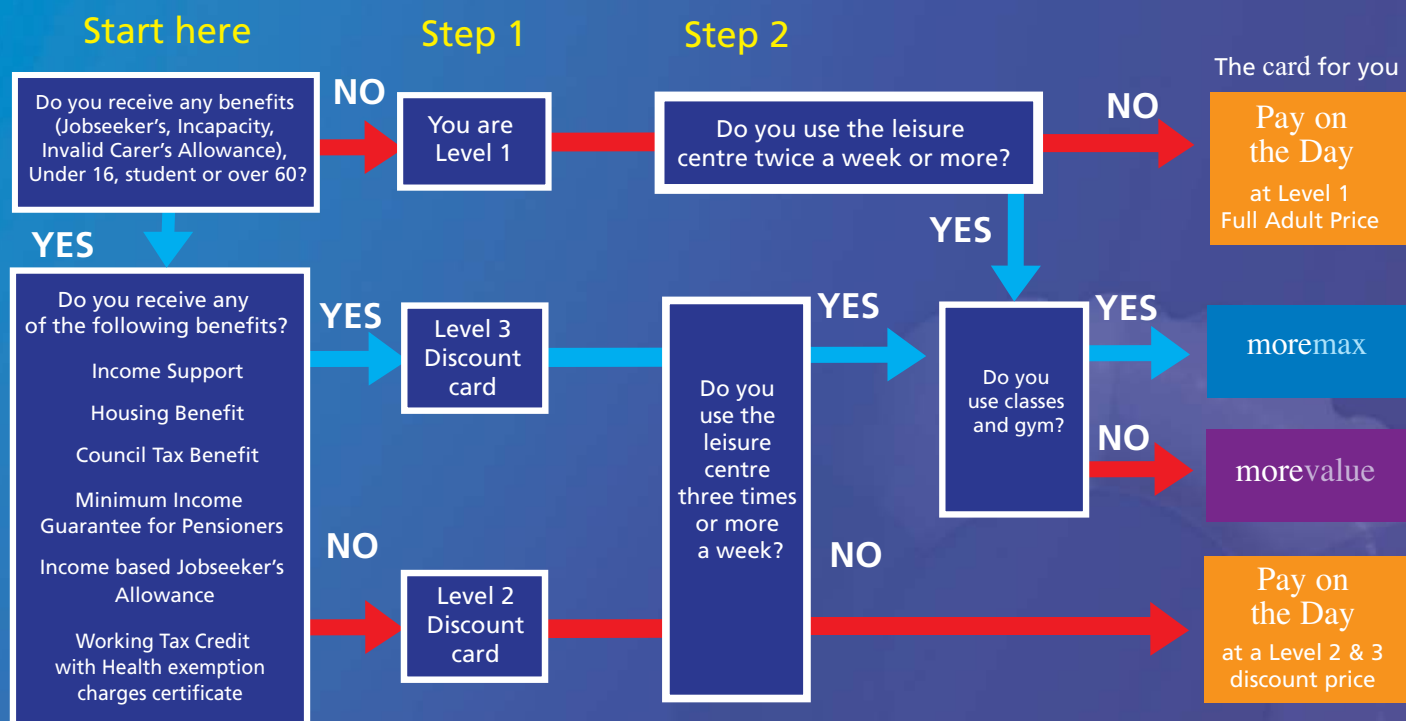
Get **more** at any of these leisure centres:

- **Abercynon Sports Centre**
Telephone: 01443 740141
- **Aberdare Swimming Pool**
Telephone: 01685 874252
- **Bronwydd Swimming Pool, Porth**
Telephone: 01443 682817
- **Hawthorn Leisure Centre**
Telephone: 01443 842873
- **Hawthorn Swimming Pool**
Telephone: 01443 841231
- **Llantrisant Leisure Centre**
Telephone: 01443 224616
- **Llantwit Fardre Leisure Centre**
Telephone: 01443 201722
- **Michael Sobell Sports Centre**
Telephone: 01685 874323
- **Rhondda Fach Sports Centre, Tylorstown**
Telephone: 01443 756242
- **Rhondda Sports Centre, Ystrad**
Telephone: 01443 434093
- **Tonyrefail Leisure Centre**
Telephone: 01443 670578
- **Direct Debit (more card) enquiries**
Telephone: 01443 400563

www.rhondda-cynon- Taf.gov.uk

www.whatsonrct.co.uk

Choosing the card for you



This chart is intended only as a guide to help you find the right card for you. To find out which card you are eligible for, please ask at your local leisure centre. The Council reserves the right to decide which types of benefits are included in the scheme. You can choose to pay by Direct Debit or buy the card monthly or annually.

Getting more from your card

Our leisure centres offer a wide range of classes and activities to suit all ages and abilities, including free swimming for ages 16 and under during school holidays and over 60s at any time! Most leisure centres have a range of function rooms, so why not host your children's party, wedding or conference in one?

Our new website allows you to search by activity, venue, age or day, so if you are searching for a specific activity or just want to get fit on a Tuesday, then you can use this search facility. For further information click on...

www.whatsonrct.co.uk

Or pick up a copy of our new **What's on Leisure and Sports brochure** from any of our leisure centres, libraries or one4all centres.

Or call **01443 425700** for a copy

To book your class or activity online, go to...

<http://leisure.rctcbc.gov.uk>

or go to www.rctcbc.gov.uk and click on **Leisure Facilities**

As part of the more card scheme, the Council's Leisure and Children's Services are providing opportunities for registered foster carers and their families to access a range of physical activities at leisure centres.

